



Charting The Way Ahead

Alison Munro
Chief Executive HS2



Agenda

- HS2 objectives
- HS2 brief
- Programme and organisation
- External input
- Work structure
- Some of the challenges ahead



Department for
Transport

Britain's Transport Infrastructure High Speed Two

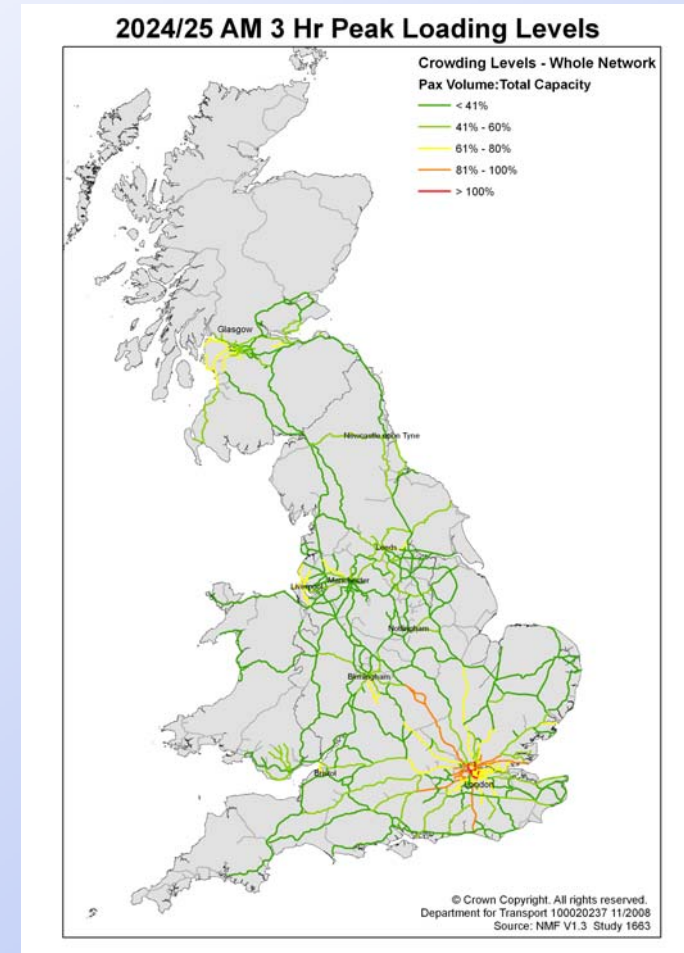


January 2009



HS2 Objectives (1)

- Initial focus on London to the West Midlands
- Passenger capacity
- Speed and connectivity
- Supporting housing growth and regional economic development
- Potential benefits for freight
- Environment and climate change

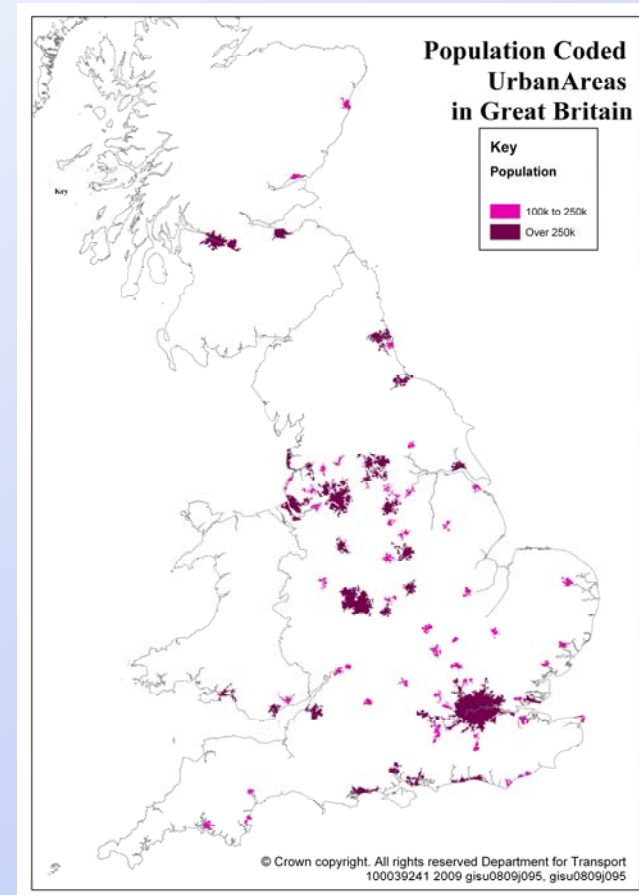


Loading Levels in the 3-Hour Morning Peak Period, 2024/25 (Source: DfT)



HS2 Objectives (2)

- Advise on potential development beyond the West Midlands at broad corridor level
 - Greater Manchester
 - Scotland
 - West Yorkshire
 - North East
- Implications for the design of London to West Midlands section
- Cost effective provision for the future



Major centres of urban population in Great Britain (Source: DfT)



HS2 Brief – requirements (1)

- Connect London and the West Midlands
- Options for access to central London and other cities served
- City centre and parkway options
- Options for interchange with Crossrail and GWML, providing convenient access to Heathrow





HS2 Brief – requirements (2)

- Investigate options for:
 - an intermediate station
 - a connection to HS1
- Services on the new line must be able to run onto classic lines - bringing wider benefits
- New line will be interoperable, therefore capable of taking double deck trains
- Investigate costs of providing freight capability



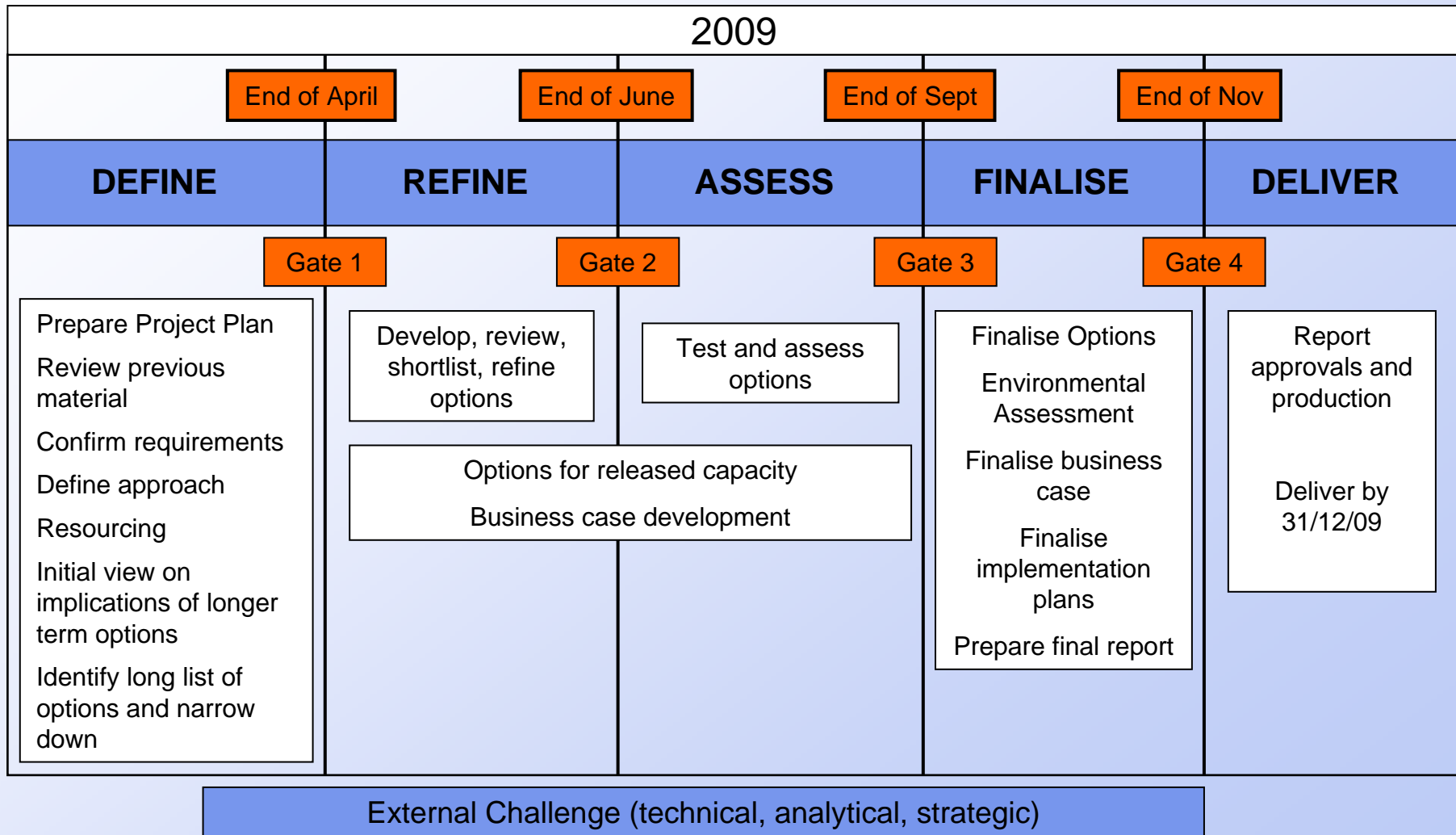


HS2 brief - outputs

- A route proposal for London to the West Midlands, and options, as the basis for progress to public consultation in 2010
- A business case for London – West Midlands
- Proposals for use of released capacity
- Proposals for structuring the project for delivery and financing
- Blight management and safeguarding strategy
- Advice on potential development beyond West Midlands

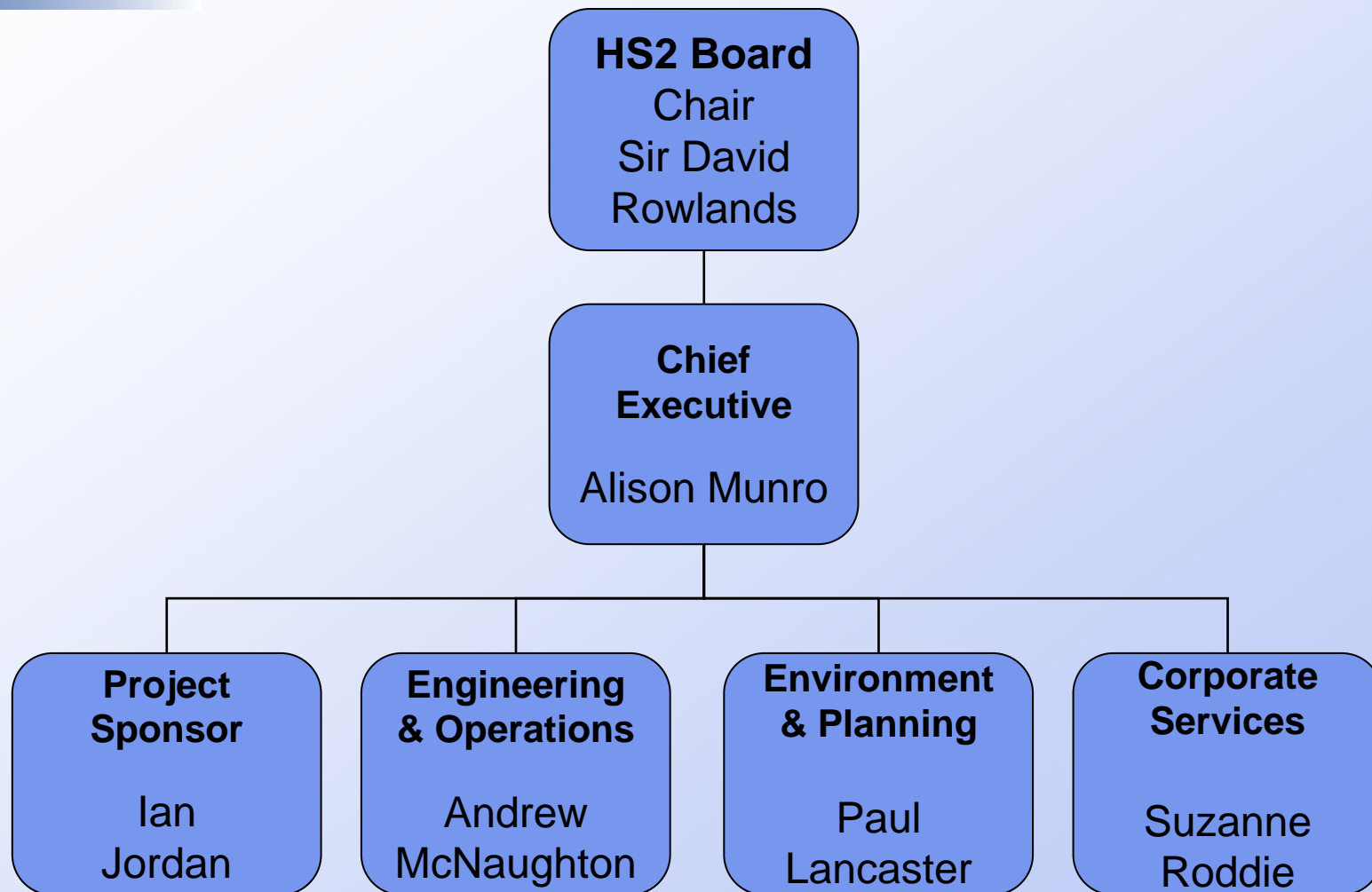


HS2 Work Programme





The HS2 Company



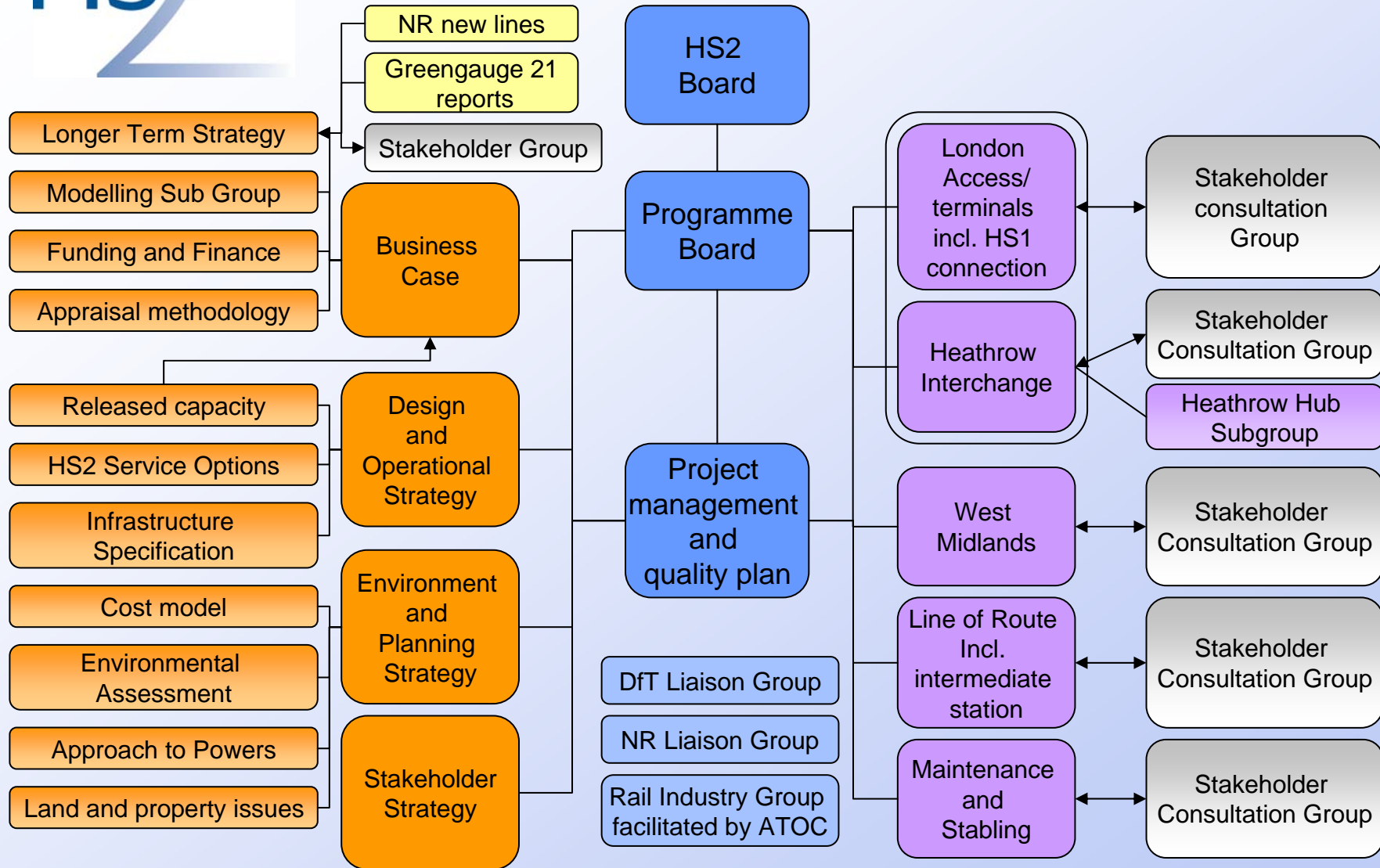


External Input

- Working with key partners in developing proposals
- Effective relationships with stakeholders will be critical to success
- External challenge
- Learning from others' experience



Work Structure





Some of the challenges ahead...

- A problem/objectives led solution which reflects future travel demand and supports wider policies
- Capturing wider benefits from improved connectivity
- Finding feasible, attractive but affordable options for access to city centres
- An environmentally acceptable solution...
 - ... which is also affordable
- Avoid creating widespread concern and blight
- Building common understanding and consensus



Conclusions

- All by end of December 2009
- We have started
- A challenging, but deliverable, agenda

www.hs2.org.uk

